

Nail-Lam Columns

by



Another Reason We Are Your

1-Stop Shop for All Things Post Frame!

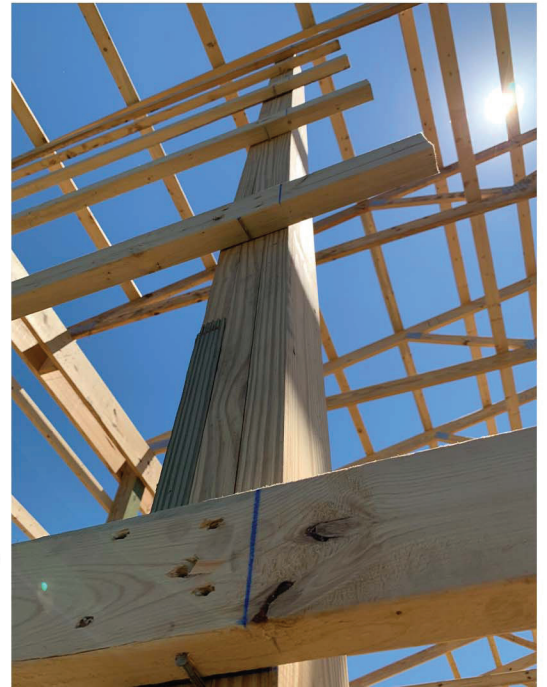
- Straighter, stronger, and lighter than solid sawn post
- Won't split, warp or twist allowing for easier framing and finishing
- Saves you time and money in the field by reducing labor cost and callbacks
- 3 ply, 4 ply, and 5 ply 2x6 and 2x8 columns are available up to 40' feet
- Column design and engineering available
- Stocking programs available

NAIL-LAM COLUMNS

Graber Post Buildings, Inc. has been known for over 40 years as a producer and supplier of quality buildings products to the Post Frame industry. We pride ourselves in being a One-Stop shop for all things post frame, and we are please to offer the GPB Nail Lam columns to our product offering. Only the best raw materials are used in our columns and we start with **#1 Southern Pine** lumber for both treated and untreated portions of the column. The bottom treated part of the column is protected against rot, decay and insect damage (.60 CCA; Also, .80 CCA is an option and carries the same warranty). Our columns are produced with the most advanced technology equipment in our state of the art production facility. GPB Nail Lam Columns will save you time and money on your next project. Call us today!

Why Buy a GPB Nail-Lam Column?

- Graber Post Buildings, Inc. is a recognized leader in the Post Frame industry, a one-stop shop for all things Post Frame.
- Our columns reduce labor cost and eliminate call backs because they are stronger, straighter and lighter than solid posts.
- Our columns won't split, warp, or twist, allowing for easier framing and finishing.
- The upper 18"-24" of each column contains no fasteners or adhesive allowing individual plies to be notched in the field for a superior truss connection.
- The plies are glued, nailed, and planed on all sides giving you a uniform product to frame with.
- Column design and sizing available.
- Stocking programs available.
- Post protectors available for our nail-lams.
- Perna-Column and Sturdi-Wall brackets available for our nail-lams.



Graber Post Buildings, Inc.

7716 N 900 E | Montgomery, IN 47558
Phone: 812-636-7355 | Toll Free: 800-264-5013
Fax: 812-636-4936 | Email: info@graberpost.com
www.graberpost.com



A '1-Stop Shop' for all Post Frame projects.

Since 1973, Graber Post has been committed to our customers and their building materials needs. Our GPB Nail Lam Columns are just one facet of our manufacturing plant in rural Daviess County, Indiana. These 3-ply, 4-ply, and 5-ply laminated posts are available on an individual basis, by the bundle, or by the truckload.

We start with the best raw materials, then add quality workmanship from our local Amish community. At Graber Post, we keep things simple: provide the best products at a fair price while adding an element of service that exceeds our customers expectations. We live up to our slogan, **"Quality You Can County On, From A Company You Can Trust"**.



Graber Post Buildings, Inc.

7716 N 900 E | Montgomery, IN 47558

Phone: 812-636-7355 | Toll Free: 800-264-5013

Fax: 812-636-4936 | Email: info@graberpost.com

www.graberpost.com